

LUSO

INTERNATIONAL ARMS COMPANY

USER'S MANUAL

FOR

L4 SEMI AUTOMATIC SHOTGUN



**READ THE INSTRUCTIONS AND WARNINGS IN THIS
MANUAL CAREFULLY BEFORE USING THE FIREARM**

WARNINGS AND SAFETY

- **Make sure that inside of the barrel are free from any obstacles before using the shotgun.**
- **Use only safe and proper pressurized shotshells that are factory loaded.**
- **Use protective outfit and equipment while shooting.**
- **Keep you finger away from the trigger while loading-unloading your shotgun even when the safety is on "Safe" position.**
- **Always keep the barrel of shotgun pointed in a safety direction.**
- **After every using the shotgun, clean and maintain your shotgun as shown in this manual.**
- **Do not make any alterations or modifications on your shotgun.**
- **Store your shotgun in a safe place beyond the reach of children and unauthorized persons.**

USAGE OF THE SHOTGUN

- Pull the cocking handle of the **L4** semi-automatic shotgun and press the bolt release lever.
- You can refill cartridge forward by pushing inside the magazine tube on the bottom of shotgun.
- Press the cartridge release button on the side of the trigger guard.
- When pull the cocking handle and release, barrel gets a full cartridge, switches to firing position and ready fire.
- When fire all of the cartridges in the magazine tube, the needle mechanism and the cocking handle remain stable in the reverse position

CLEAN AND MAINTAIN AFTER EACH USE OF SHOTGUN

DISASSEMBLY AND MAINTENANCE



Before starting disassembly, point the barrel to a safe direction and keep your finger away from the trigger. Make sure that your shotgun is unloaded.



Remove the nut in the magazine tube.

DISASSEMBLY AND MAINTENANCE



By holding the forend, remove the barrel forward.



By turning the cocking handle, pull and remove.

DISASSEMBLY AND MAINTENANCE



By the pushing the needle mechanism, remove.



Push the pin in illustration with the help of the cocking handle.

DISASSEMBLY AND MAINTENANCE



Remove the pin in illustration with the help of the cocking handle(Remove the trigger guard.)



Turning the piston drainage system, disassemble

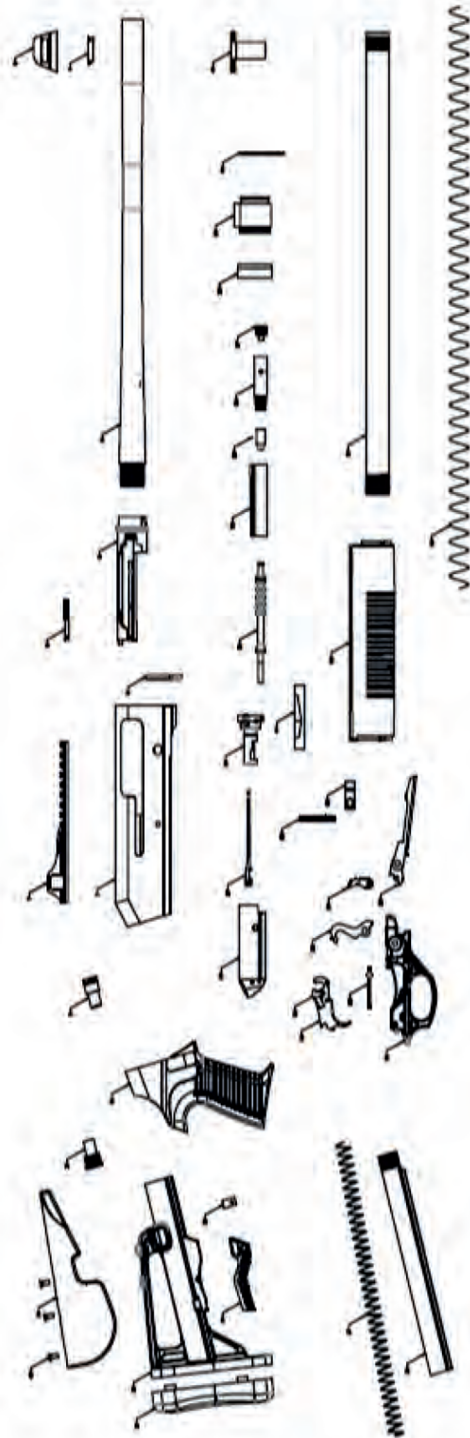
DISASSEMBLY AND MAINTENANCE



Remove the piston by dragging



The disassembled shotgun is as in an illustration, after cleaning, reverse the disassembling procedure and reassemble your shotgun.



- 1 RECEIVER
- 2 CAP
- 3 BARREL
- 4 PLATE
- 5 FRONT BEAD
- 6 EJECTOR
- 7 BACKSIGHT
- 8 FRONT PANEL
- 9 SPRING HOLDER
- 10 CHEEK

- 11 SPRING CAP
- 12 BUTTSTOCK BASE
- 13 BUTTSTOCK RECEIVER
- 14 TELESCOPIC BUTTON
- 15 TELESCOPIC PIN
- 16 GRIP
- 17 RECOIL SPRING
- 18 RECOIL TUBE
- 19 TRIGGER
- 20 SEAR

- 21 TRIGGER GROUP COVER
- 22 SPRING LEVER
- 23 HAMMER
- 24 CARRIER LEVER
- 25 CARRIER
- 26 MECHANISM
- 27 FIRING PIN
- 28 RETAINING PIN
- 29 SIDE BUTTON
- 30 LOCKING HEAD

- 31 GAS PISTON
- 32 FOREND
- 33 GAS CHAMBER
- 34 MAGAZINE TUBE
- 35 DRAIN INTERNAL PLUG
- 36 DRAIN FRAME
- 37 DRAIN EXTERNAL PLUG
- 38 MIDDLE RING PLUG
- 39 MIDDLE RING
- 40 BELTING

- 41 FRONT RING
- 42 MAGAZINE SPRING
- 43 CHEEK SCREW
- 44 SIDE PANEL

WARRANTY

This warranty only applies to LUS50 ARMS products imported by the importer in your Country.

The manufacturer guarantees that our products are scrupulously checked against defects in materials, workmanship, aesthetics and functioning problems .

In case you find a defect in one of our products, you should immediately contact your importer. All warranty work will be performed your importer.

ATTENTION: All customers returning product for warranty service must first obtain an RMA (Return Merchandise Authorization) from the importer. The request for an RMA (Return Merchandise Authorization) may be obtained through our web site or email. Information required is name and address, model, serial number, and defect . It is the customer's responsibility for adequately packaging the product to prevent shipping damage . Any damages occurred during transportation and handling will be the customer's responsibility .

The LUS50 guarantees two years after the original purchase date of the original owner. Wood is covered for 30 Days. The customer must provide evidence they are the original owner and proof of the purchase date with a receipt or other valid proof.

In the event a defect which is covered by this guarantee is not repairable, the manufacturer will provide for a free substitution of the product .

THE MANUFACTURER RESERVES THE RIGHT OF DEFINING THE TYPE OF DEFECT OF THE FIREARM AND THEREFORE TO STATE WHETHER THE DEFECT IS COVERED BY GUARANTEE.

The manufacturer's decision will be fair but final. Should the manufacturer become aware of a defect of a product during the guarantee period, the defective part will be replaced free of charge .
The guarantee does not cover parts subject to wear and corrosion.

ATTENTION: DELIVERY EXPENSES TO AND FROM THE SERVICE CENTER ARE NOT COVERED BY THE GUARANTEE AND WILL BE CHARGED TO THE CUSTOMER.

WARRANTY CONDITIONS

The Guarantee Is Void In Case:

- Failure to comply with instructions in the manual.
- Inadequate ammunition has been used (any ammunition but those commonly on sale, reloaded ammunition, different from caliber and specification indicated on the firearm barrel. not compliant with international standards and/or loaded manually and/or reloaded.)
- The product failed to be provided proper maintenance and cleaning
- The product has been modified without our prior consent
- Misuse, Unauthorized, inadequate, or incorrect repairs have been carried out
- Non-original spare parts were used (Products, parts, or services not manufactured, licensed, or supplied by LUSO)
- Parts subject to wear, rust and corrosion (Normal wear and tear resulting from the use of the shotgun, including scratches, dents, and other cosmetic damage to the surface of finish parts in metal, wood, plastic, rubber or other materials.)
- Damage (improper use of the gun by the user)
- Expired guarantee
- Obstructions in the barrel.

In the above cases the repair, if completed, will be charged to the customer.

In case, for any valid reason, you do not have the possibility to obtain repair under guarantee at the shop where you bought the product, you may contact us directly for warranty service or questions:

Sener Savunma TIC. LTD. STI.
Konya - TURKEY
Email: hello@senersavunma.com .

THIS MANUAL MUST ALWAYS FOLLOW THE PRODUCT, ALSO IN THE EVENT OF NEW OWNERSHIP.

LUSO
INTERNATIONAL ARMS COMPANY